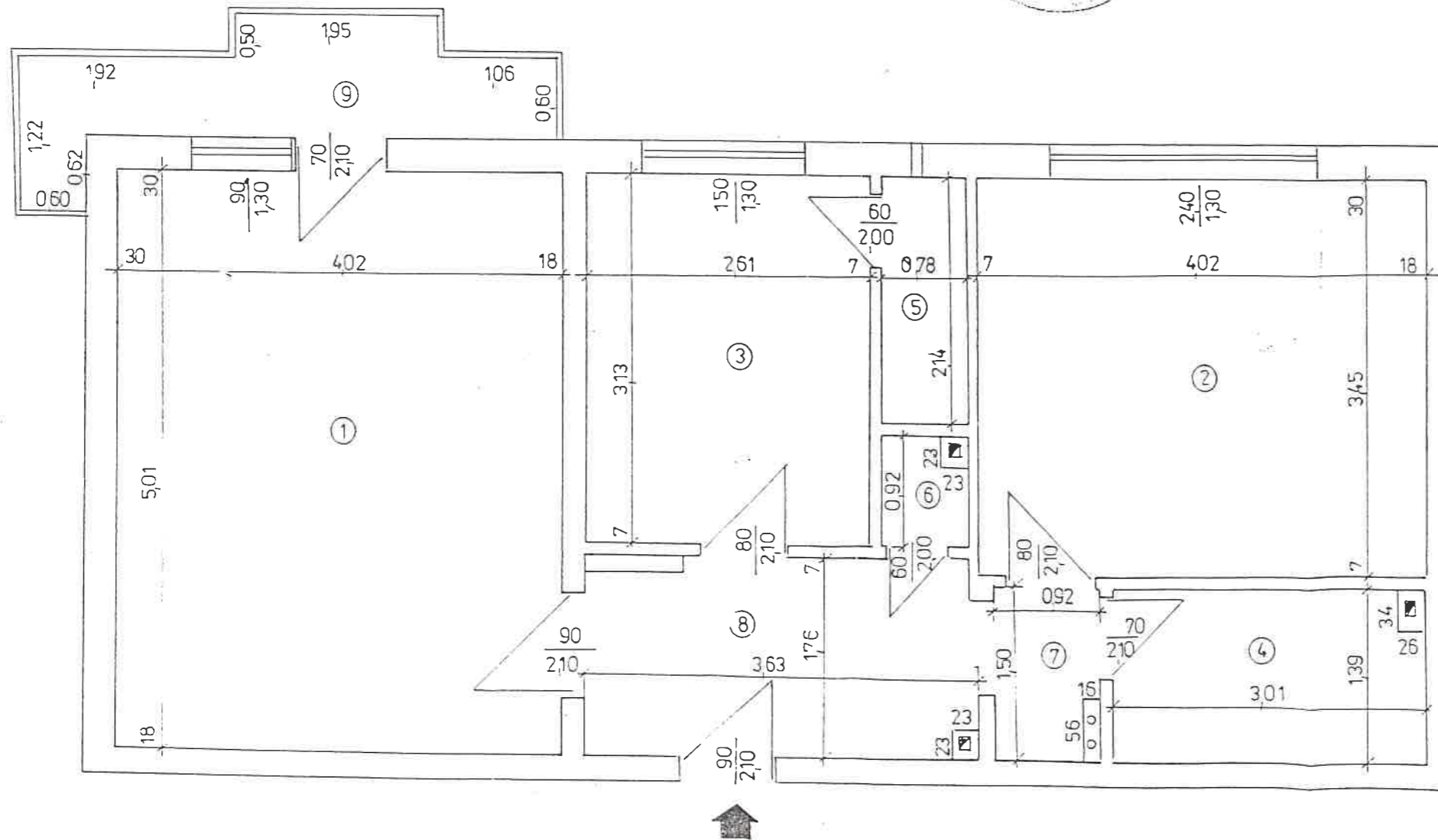
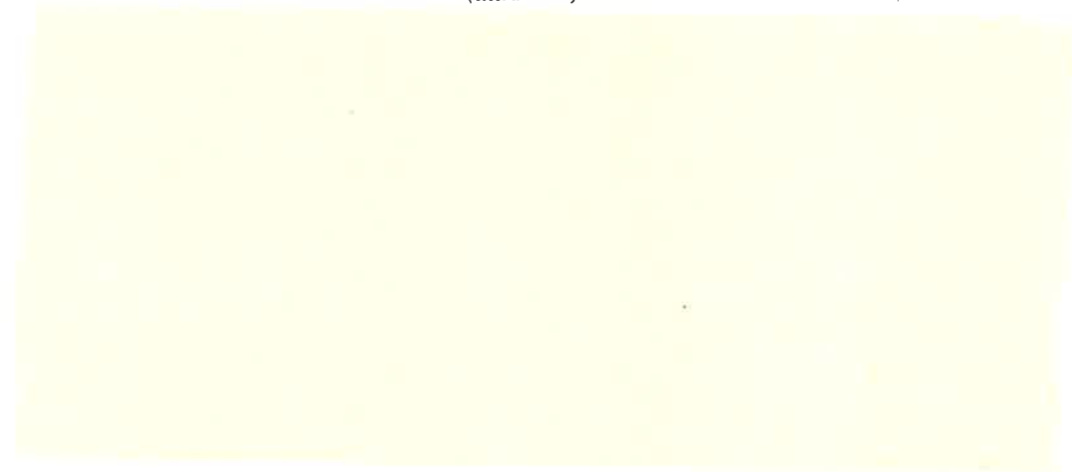


PLAN DE AMPLASAMENT SI DELIMITARE A CORPULUI DE PROPRIETATE
(intravilan)



RECAPITULATIE

Nr. incapere	Denumire incapere	Supraf.utila (mp)
1	Camera de zi	20,14
2	Camera	13,87
3	Bucatarie	8,17
4	Baie	4,09
5	Camara	1,67
6	Debara	0,67
7	Sas	1,38
8	Vestibul	6,33
Total supraf. utila		56,32
9	Balcon	4,31
Total		60,63



Data
24.08.2002