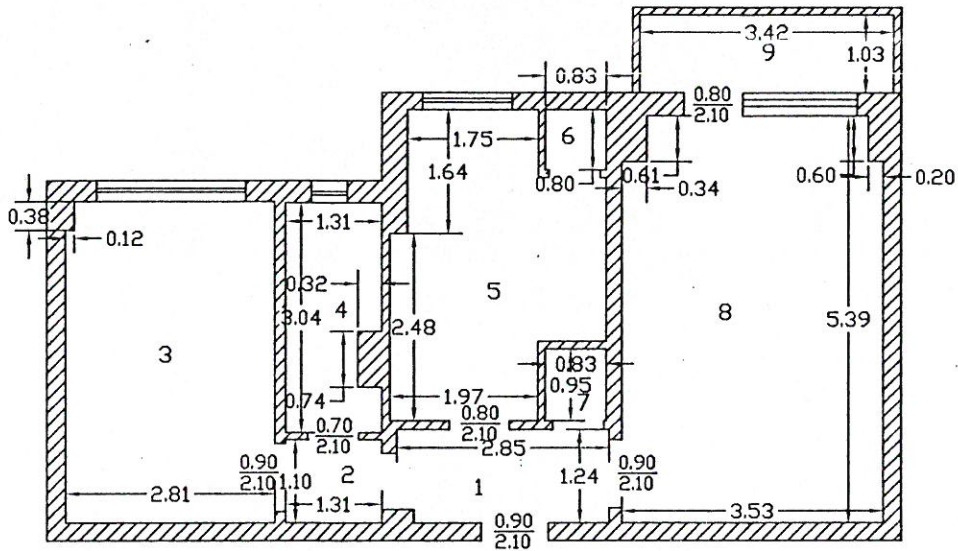


ING. MARIANA NEA



RECAPITULATIE

NR. INC	DENUMIRE	SUP.
1	HOL	3.49
2	SASS	1.44
3	CAMERA	11.90
4	BAIE	3.75
5	BUCATARIE	9.76
6	CAMARA	0.66
7	DEBARA	0.79
8	CAMERA ZI	18.70
TOTAL		50.49
9	BALCON	3.52
SUPRAF. TOTALA		54.01

Intocmit,



FEBRUARIE 2005